

SECTION III

Art Division

GENERAL GUIDELINES

Entries must be the sole work of the student and must have been started after the completion of the previous International Student Convention. Students are encouraged to draw from their own ideas for subject matter and composition. It is recognized that copying other artwork is one method of learning but should not be presented as the original work of the student.

Entries must meet ALL A.C.E. standards as far as dress codes and suitable subject matter are concerned. Violations of such standards will prevent the entry from placing. All entries must be done in realistic style—no abstract, surreal, or cartoon styles. **No artwork should attempt to portray the face of Christ.** No color-by-number paintings will be accepted.

Note: In ALL art categories, male and female contestants are judged together.

Checklist for Entries:

1. Entries must arrive for judging in satisfactory exhibition condition. (See framing.)
2. Judge's Forms (CF35, CF36)—**Three (3) copies** for each entry must be completed and submitted with the entry. **THESE ARE FOR REGIONAL CONVENTION ONLY.**
3. Entries must have a 3" x 5" card securely attached to the back with the following information: category, student's name, school name, customer number, school address, city, state/province, ZIP/Postal Code.

Note to Sponsor: Be sure the contestant enters the correct category. Review the judging criteria to see where points are given, and make sure the entry includes each point.

A.C.E. IS NOT RESPONSIBLE FOR LOST, STOLEN, OR DAMAGED ENTRIES.

Framing

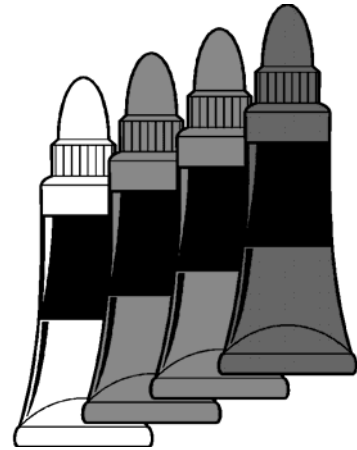
All artwork must be enclosed in some type of frame except sculpture, woodworking, and metalworking. Mat board may be used in conjunction with a frame, but is not considered a frame itself. **ARTWORK MUST BE READY TO HANG WITH WIRE HANGERS.**

Packing

All contestants are responsible for the packaging, transporting, and proper handling of their own artwork. Minor touch-ups are permitted. No entry may exceed 40 pounds in weight or three feet in length, width, or height.

TYPES OF ENTRIES

1. Oil
2. Watercolor
3. Acrylics
4. Sketching—any monochromatic sketching medium
5. Colored pencils
6. Pen and Ink—monochromatic pen or brush work
7. Pastels
8. Scrapbooking
9. Sculpture
10. Metalwork
11. Wood Construction
12. Wood Turning
13. Woodcarving
14. Marquetry
15. Pennant Design



BRUSH/PEN JUDGING CRITERIA

Areas of Evaluation

Composition

- | | |
|----------------------------------------------------|--------|
| A. Distinct clarity in light and dark masses | (1-10) |
| B. Color tones are balanced in hot and cool values | (1-5) |
| C. Harmonious balance maintained throughout | (1-5) |

Rhythm

- | | |
|---------------------------------------------------------|-------|
| A. All lines and masses flow with meaningful continuity | (1-5) |
| B. Technique convincingly conveys mood | (1-5) |
| C. Composition leads into one focal point | (1-5) |

Logic

- | | |
|------------------------------------------|--------|
| A. Direction of light is clearly defined | (1-10) |
| B. Perspective is convincing | (1-10) |

Handling of media

- | | |
|-----------------------------------------------------|-------|
| A. Construction of subject is confidently expressed | (1-5) |
| B. Contrast and highlights are effectively used | (1-5) |
| C. Multiple textural effects are used | (1-5) |

General merits of entire presentation

- | | |
|------------------------------------------------------------|--------|
| A. Degree of difficulty | (1-10) |
| B. Artist delivers proof of his understanding subject | (1-5) |
| C. Frame is in harmony with composition to enhance project | (1-5) |
| D. Artwork has a wire hanger | (1-5) |

Proper documentation submitted

(1-5)

TOTAL POINTS (100)

SCRAPBOOKING (Female Only)

NONPERFORMANCE EVENT

GENERAL GUIDELINES

1. ALL entries must be the sole work of the student, and projects must have been started after the completion of the previous International Student Convention. Contestant is limited to one entry.
2. Layout may be 8" x 8" or larger and must be a scrapbook layout. Cards and other craft projects cannot be submitted as the entire entry. The final entry should not be entirely digital.
3. Use a clean and simple layout that tells a story, portrays a theme or event, or illustrates a character trait. Arrangement needs to make a visual impact without being cluttered or too busy.
4. All items including photos in the entry **MUST conform** to A.C.E. Student Convention dress standards and guidelines.
5. Entries must be a minimum of two pages but not exceed twelve pages.
6. Three (3) copies of the JUDGES FORMS (CF34) are required for Regional Convention.
7. Entry must have a 3" x 5" card securely attached to the back with the following information neatly printed or typed: category, student's name, school name, customer number, school address, city, state/province, ZIP/Postal Code.
8. Each page must be in a plastic page protector within a standard nondecorative binder. Binder will not be judged.
9. A.C.E. is not responsible for entries lost or damaged.
10. Entry must have a clearly stated theme.

SCRAPBOOKING JUDGING CRITERIA

Areas of Evaluation

POSSIBLE POINTS

- | | |
|--------------------------------------------------------------------------|--------|
| 1. Appropriate theme | (1-5) |
| 2. Good choice of clear photos with sharp images | (1-10) |
| 3. Meets Convention Guidelines | (1-5) |
| 4. Focal point with photos cut into pleasing sizes and shapes | (1-5) |
| 5. Mats and frames proportioned to layout size and design | (1-5) |
| 6. Composition and well-designed layout consistent to theme | (1-20) |
| 7. Journaling with title appropriate for composition | (1-10) |
| 8. Color in the layout to complement photos and color scheme | (1-10) |
| 9. Embellishments arranged well and complementing the photos | (1-10) |
| 10. Creativity evidencing effort and use of techniques and craftsmanship | (1-20) |

TOTAL POINTS (100)

HINTS FROM THE SCRAPBOOKING JUDGES

1. Photos—Choose photos with clean, sharp images. Check background and number of subjects in photo. All people in photos must be appropriately dressed according to A.C.E. Student Convention dress standards.
2. Paper Color and Design—Select paper or cardstock to complement photos.
3. Crop—Cut or trim photos using templates or decorative-edge scissors to add interest.
4. Mat or Frame—Use single or layered mats; may be torn or cut with scissors. Templates, punches, and decorative-edge scissors create unique shapes.
5. Layout—Arrange photos with a focal point depicting the theme. Overlap photos or create a collage for added variety.
6. Title and Journaling—Include: a. Who? b. What? c. Where? d. When? e. Why?
7. Decorative embellishments – Use creativity over purchased embellishments.

SCULPTURE (Male/Female)

NONPERFORMANCE EVENT

Entries in this category must be entirely hand built and can be made of any **CLAY OR POLYMER CLAY**. The use of slip molds or greenware available from ceramic or craft houses **is not allowed**. Slip molds may be used if the mold is made by the student, in which case, the mold must be submitted as part of the project. [NOTE: Some clay sculptures may require kiln-firing to protect the entry.] The entry may not exceed two feet in any direction (length, width, or height).



METALWORKING (Male/Female)

NONPERFORMANCE EVENT

Entries in this category must be made of **METAL ONLY**. Items may be made from any type of metal. The student may use any type of power tool needed (nippers, welders, grinder, etc.) to form the entry. Items may not exceed three feet in any direction (length, width, and height). Craft items such as book ends, belt buckles, penholders, etc., are not acceptable. Weapons are not acceptable (knives, swords, maces, axes, guns, etc.).

METALWORKING AND SCULPTURE JUDGING CRITERIA

Areas of Evaluation

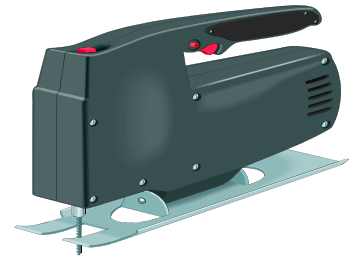
	POSSIBLE POINTS
Concept	
A. Definite purpose or theme	(1-5)
B. Presented in original fashion	(1-10)
C. Composition is not split into two independent sections	(1-5)
Design	
A. Size and weight in conjunction with purpose	(1-5)
B. Area of space used has balance and harmony	(1-5)
C. Edges of actual shape express thoughtful planning	(1-10)
D. All parts in harmony with medium	(1-10)
Technique	
A. Construction and craftsmanship confidently expressed	(1-10)
B. Textural effects	(1-10)
C. Proper finish or glaze, either applied or natural	(1-10)
D. Knowledge of and/or use of tools required	(1-5)
E. Degree of difficulty	(1-10)
Proper documentation submitted	(1-5)
TOTAL POINTS	(100)

WOODWORKING (Male/Female)

NONPERFORMANCE EVENT

TYPES OF ENTRIES

- Wood Construction
- Wood Turning
- Woodcarving
- Marquetry



GENERAL GUIDELINES

1. Projects must be made of wood. Any appropriate screws, hinges, fasteners, locks, slides, glass, etc., that are required to bring the project to a functional completion are acceptable.
2. Any added mechanical parts (hinges, locks, slides, glass, etc.) will not be judged, but the fitting of them to the project will be judged.
3. ALL work must be the sole work of the student, and projects must have been started after the completion of the previous International Student Convention.
4. All entries must be accompanied by a pattern and a typed project report (double-spaced) listing the steps of construction and tools used. Any variation from the pattern must be explained in the report.
5. Any project wired for electricity must meet UL standards.
6. Projects may not exceed three feet in any direction (length, height, or width).
7. All projects must comply with Biblical standards of modesty and behavior. No weapons of any kind are acceptable. **No work should attempt to portray the face of Christ.**
8. Craft items such as miniature toys or models or pre-cut kits are not acceptable.

WOOD CONSTRUCTION

Projects in this category must display at least two joinery techniques (Mortise-Tenon, Dovetail, Butt, etc.). Contestants may use hand tools, power tools, or a combination of both. Some examples of wood construction are a table, a chest, a shelving unit, etc. See wood construction judging criteria.

WOOD TURNING

In this category, contestants must use a wood-turning lathe and any other associated tool. Any method or combination of methods is acceptable. Projects may be one piece (e.g., bowl), multiple pieces that are assembled (e.g., kitchen stool), or several pieces that form a set (e.g., desk set). A project that has several pieces assembled must be at least 80 percent lathe work. See wood turning judging criteria.

WOODCARVING

The use of power tools for cutting or roughing a piece is acceptable, but at least two-thirds of the project must be hand carved. Projects may incorporate more than one form of woodcarving. See woodcarving judging criteria.

MARQUETRY

Marquetry is inlaid work of various colored thin woods (veneers) to make a picture or design. Marquetry on other projects is acceptable, but only the marquetry will be judged, and the piece may only be entered in one category. See marquetry judging criteria.

WOOD CONSTRUCTION JUDGING CRITERIA

Areas of Evaluation

	POSSIBLE POINTS
Choice of subject	(1-5)
Project has a useful purpose	(1-5)
Fitness for purpose	(1-5)
Pattern/Project Report	(1-10)
At least two different joinery techniques evident	(1-10)
Appropriate joints used	(1-5)
Accuracy of joinery	(1-15)
Craftsmanship/overall construction	(1-10)
Preparation for finish	(1-10)
Application of appropriate finish	(1-10)
Degree of difficulty	(1-10)
Proper documentation submitted	(1-5)
TOTAL POINTS	(100)

WOOD TURNING JUDGING CRITERIA

Areas of Evaluation

	POSSIBLE POINTS
Choice of materials	(1-5)
Proportion	(1-5)
Fitness for purpose	(1-5)
Pattern/Project Report	(1-10)
Craftsmanship	(1-20)
Knowledge of and/or use of tools	(1-10)
Fitting	(1-10)
Preparation for finish	(1-10)
Application of appropriate finish	(1-10)
Degree of difficulty	(1-10)
Proper documentation submitted	(1-5)
TOTAL POINTS	(100)

WOODCARVING JUDGING CRITERIA

Areas of Evaluation

	POSSIBLE POINTS
Choice of timber	(1-5)
Choice of subject	(1-5)
Pattern/Project Report	(1-10)
Proportion	(1-10)
Craftsmanship	(1-15)
Accurate use of tools	(1-5)
Attention to detail	(1-10)
Textual effects	(1-5)
Preparation for finish	(1-10)
Application of appropriate finish	(1-10)
Degree of difficulty	(1-10)
Proper documentation submitted	(1-5)
TOTAL POINTS	(100)

MARQUETRY JUDGING CRITERIA

Areas of Evaluation

	POSSIBLE POINTS
Choice of subject	(1-5)
Pattern/Project Report	(1-10)
Inlay choice enhances design	(1-10)
Pleasing design pattern/realistic picture	(1-10)
Craftsmanship	(1-20)
Accurate use of tools	(1-5)
Attention to detail	(1-5)
Preparation for finish	(1-10)
Application of appropriate finish	(1-10)
Degree of difficulty	(1-10)
Proper documentation submitted	(1-5)
TOTAL POINTS	(100)

PENNANT DESIGN (Male/Female)

NONPERFORMANCE EVENT

The Pennant Design competition entry is to show a creative graphic design of the ISC theme for the given year. The student is free to use any graphic design program. The entry must not violate the A.C.E. standards of dress and appearance as presented in these guidelines.

REQUIREMENTS

1. The entry must have been created since the last International Student Convention.
2. Only one student may participate in the design of each entry.
3. Any graphic design program may be used in the creation of the entry.
4. Color submissions only—no larger than 9" x 12".
5. The student must submit a CD-ROM of the design with the entry in a high-resolution JPEG format.
6. Scripture must be in the King James Version.

PENNANT DESIGN CRITERIA

Areas of Evaluation

Composition	POSSIBLE POINTS
A. Distinct clarity in light and dark masses	(1-10)
B. Color tones of graphics are balanced in hot and cool values	(1-5)
C. Harmonious balance maintained throughout	(1-5)
Rhythm	
A. All components flow with meaningful continuity	(1-5)
B. Technique convincingly conveys mood	(1-5)
C. Composition leads to one focal point	(1-5)
Logic	
A. ISC theme clearly defined	(1-5)
B. Accurate ISC location and dates	(1-5)
C. Correct Scripture presented	(1-5)
D. Graphics logically represent Scripture theme	(1-5)
Handling of Media	
A. Construction of subject is confidently expressed	(1-5)
B. Contrast and dimension are effectively used	(1-5)
C. Multiple textural/visual effects are used	(1-5)
General Merits of Entire Presentation	
A. Degree of creativity	(1-10)
B. Artist delivers proof of his understanding subject	(1-5)
C. Frame is in harmony with composition to enhance projects	(1-5)
D. Artwork has a hanger	(1-5)
Proper documentation and CD-ROM submitted	(1-5)
TOTAL POINTS	(100)

HINTS FROM THE PENNANT DESIGN JUDGES

The most important elements in a Pennant Design entry are the accuracy of the information and your creativity. Use your own work and create an original presentation related to the ISC theme. Think outside the box and present something unique. Note that creativity is 10% of your total score in this event. Be sure all elements meet A.C.E. standards (photos, Scripture verses in KJV, etc.).